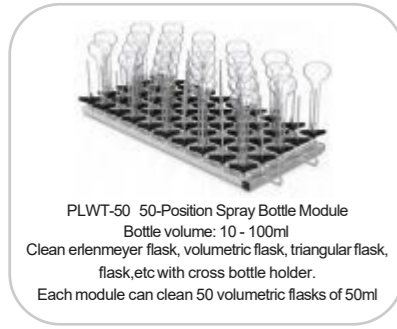


Optional Accessories: Cleaning Rack for Glassware Washer

(All seven models mentioned above are compatible.)



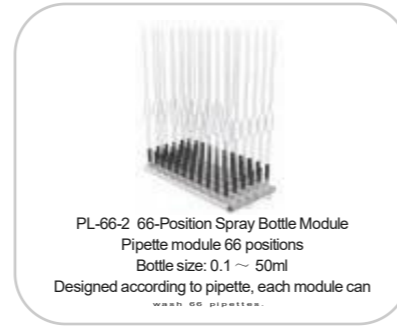
Laboratory Glassware Washer



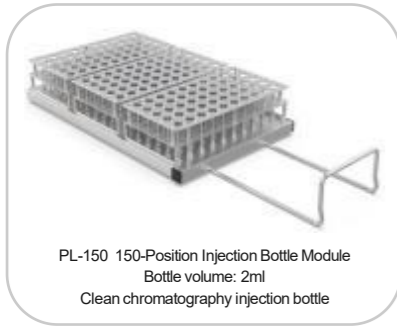
PLWT-50 50-Position Spray Bottle Module
 Bottle volume: 10 - 100ml
 Clean erlenmeyer flask, volumetric flask, triangular flask, flask, etc with cross bottle holder.
 Each module can clean 50 volumetric flasks of 50ml



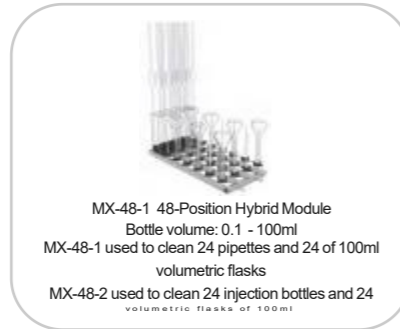
PLWT-32 32-Position Spray Bottle Module Basket
 Bottle volume: 50 - 250ml
 Clean conical flasks, volumetric flasks, triangular flasks, flasks, etc with cross bottle holder.
 Each module can clean 32 volumetric flasks of 100ml



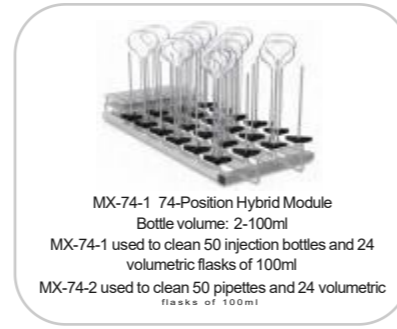
PL-66-2 66-Position Spray Bottle Module
 Pipette module 66 positions
 Bottle size: 0.1 ~ 50ml
 Designed according to pipette, each module can wash 66 pipettes.



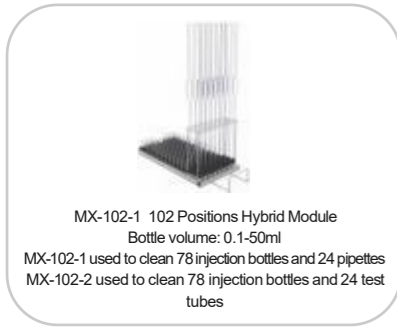
PL-150 150-Position Injection Bottle Module
 Bottle volume: 2ml
 Clean chromatography injection bottle



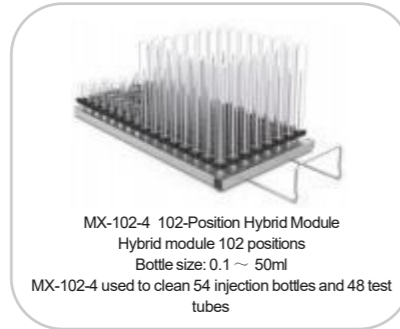
MX-48-1 48-Position Hybrid Module
 Bottle volume: 0.1 - 100ml
 MX-48-1 used to clean 24 pipettes and 24 of 100ml volumetric flasks
 MX-48-2 used to clean 24 injection bottles and 24 volumetric flasks of 100ml



MX-74-1 74-Position Hybrid Module
 Bottle volume: 2-100ml
 MX-74-1 used to clean 50 injection bottles and 24 volumetric flasks of 100ml
 MX-74-2 used to clean 50 pipettes and 24 volumetric flasks of 100ml



MX-102-1 102 Positions Hybrid Module
 Bottle volume: 0.1-50ml
 MX-102-1 used to clean 78 injection bottles and 24 pipettes
 MX-102-2 used to clean 78 injection bottles and 24 test tubes



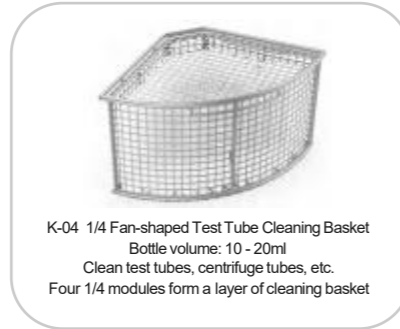
MX-102-4 102-Position Hybrid Module
 Hybrid module 102 positions
 Bottle size: 0.1 ~ 50ml
 MX-102-4 used to clean 54 injection bottles and 48 test tubes



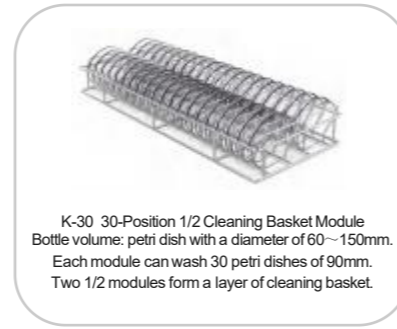
K-02 Large Quantity Cleaning Frame Module
 Bottle volume: 10 - 2000ml
 Clean jars, glass rods, bottle caps
 Two 1/2 modules form a layer of cleaning basket



K-03 1/4 Fan-shaped Test Tube Cleaning Basket
 Bottle volume: 10 - 20ml
 Clean test tubes, centrifuge tubes, etc.
 Four 1/4 modules form a layer of cleaning basket



K-04 1/4 Fan-shaped Test Tube Cleaning Basket
 Bottle volume: 10 - 20ml
 Clean test tubes, centrifuge tubes, etc.
 Four 1/4 modules form a layer of cleaning basket



K-30 30-Position 1/2 Cleaning Basket Module
 Bottle volume: petri dish with a diameter of 60~150mm.
 Each module can wash 30 petri dishes of 90mm.
 Two 1/2 modules form a layer of cleaning basket.



Humanized Operating System

- The man-machine interface features a 7-inch color LCD touchscreen (AST-60 is 4.3 inch), enabling intuitive touch operation within the visual field for convenient operation. It includes pressure sensing, making it well-suited for complex operating environments.
- The PLC programmable micro-computer operating system ensures stable and reliable performance. It is designed to be anti-magnetic and resistant to breakdowns.

Standardized Cleaning

- **Dual Peristaltic Pumps**: Disinfection effectiveness mainly depends on the correct performance of the washing phases and the neutralization of the treated material. Creatrust washers come equipped with two peristaltic pumps: one dedicated to dispensing the alkaline detergent during the cleaning phase and the other for dispensing the acid neutralizer during the neutralization phase.
- By controlling the cleaning process and monitoring key cleaning parameters through automatic program flow control, the automation and standardization of vessel cleaning can be achieved;
- Equipped with two water inlets controlled by electromagnetic valves, users have the option to select between tap water and purified water during the wash and rinse phases
- The 360° spray mechanism ensures comprehensive internal and external cleaning of the container, eliminating dead spots and ensuring optimal cleaning effectiveness.
- The pure water inlet features an integrated booster pump, enabling direct suction of purified water without the need for an external booster
- Consistency is maintained across different batches, as well as within each batch, ensuring the cleaning effect at every point remains uniform
- Enables traceability management of cleaning data for enhanced record-keeping and accountability.

Laboratory Glassware Washer



Filter System

Equipped with dual stainless steel filters to safeguard therecirculation and drainage systems. These filters can be effortlessly removed for cleaning. Additional filters are installed on all incoming water lines and air intakes to ensure debris is pumped out effectively.

Water Conductivity Monitoring(Optional Accessories)

Water Conductivity Monitoring: The sensor gauges the concentration of dissolved inorganics, such as calcium and ferrous ions, in the tank water. This provides validation of water cleanliness, hardness, and rinsing thoroughness, while also confirming the proper dispensing of detergent, rinse aid, and purified water (Kindly note the AST-60 couldn't add Water Conductivity Monitoring)

Drying System (Except for AST-60 and AST-200I)

- The forced-air "Drying System"

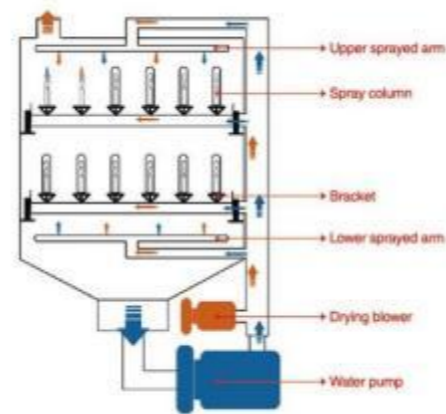
Comprised of an efficient hot air generator and a powerful fan, the system is directly managed by the programmer, enabling control over both operating time and temperature parameters. The microprocessor PLC system ensures intelligent management of the drying circuit, automatically adjusting the fan speed (thereby reducing power consumption) based on the temperature measured in the washing chamber. The efficient hot air temperature can be adjusted up to 120, enhancing the washing, rinsing, and sanitizing of glassware, as well as enabling faster drying.

- Patented TWINs System for Drying

The patented TWINs system integrateshot air with cleaning pipes, ensuring hot air reaches every corner with a 360-degree radius and no dead ends. It achieves synchronous drying of utensils and the circulation pipeline, preventing long-term moisture that can lead to bacterial growth within the pipeline.



Washing & Drying Cycle



Safety

- Three-level password protection to meet different management needs and prevent unauthorized access.
- Memory function for parameter settings in case of power failure, ensuring washer cycles resume automatically when power is restored.
- Safety protection for water temperature and dry air temperature, with the unit automatically shutting down when the temperature exceeds the set limit.
- Electromagnetic release safety lock to prevent door opening during the wash/dry cycle.
- Safety electrical system with protection against circuit overload, short circuit, over current, and leakage current.
- Safety emergency button to stop the unit promptly in case of an emergency.
- Door design with anti-fall and anti-rebound features, capable of being stopped at any angle from 0 to 90 degrees after opening.
- Alarm system including alerts for circulating pump overheating, abnormal water heating, abnormal air heating, cleaning agent shortage, door not closed, abnormal water intake, and over-low alarms.
- USB port for exporting all data related to completed washing and disinfection programs.

Standard Cleaning racks

- AST-60: can choose any one unit cleaning rack from B series as standard configuration
- AST-120: with one unit CWIR36 cleaning rack as standard configuration
- AST-200: with two units CWIR36 cleaning rack as standard configuration
- AST-200I: with two units CWIR36A cleaning rack as standard configuration
- AST-220: with two units CWIR36 cleaning rack as standard configuration
- AST-320:with three units CWIR36 cleaning rack as standard configuration



Specification

Model	AST-60	AST-120	AST-200I	
Capacity(L)	90	120	200	
Display	4.3 inch LCD touch screen	7inch LCD touch screen		
Standard Program	3	12 (can free upgrade to 40 units)		
Self-defined Program	/	99 (can free upgrade to 200 units)		
Data Files	Cleaning program files, cleaning record files, Monitor files			
Storage	Yes			
Permission management system	Three level			
Printer	No , with USB interface			
Drying	Drying system	Heat exchange system		
	Drying Time Range	/	0 to 30 mins	/
	Drying Temp Range	RT to 120°C		
	Drying Method	Chamber natural drying	Hot air injection via prinikler	Chamber natural drying
Water inlet pipe	Quantity	2		
	Length	3m		
	Material	PVC		
	Consumption	0.25kW	0.4kW	0.75kW
Pipeline Pressure Monitoring	Optional			
Structure	Material	External	304 stainless steel	
		Cleaning chamber	316 stainless steel	
	Door	Dual-Point Electronic Control Door Lock		
Foot	No casters	Four universal casters		
Cleaning Layer	1 layer	1 layer	2 layer	
Air Heating	/	3kW	/	
Power Supply	220/110V,50/60Hz			
Consumption	3.5kW	6kW	4kW	
Internal Size(W×D×H)(mm)	470×462×422	600×629×539	526×542×645	
External Size(W×D×H)(mm)	529×648×650	980×740×870	607×840×1050	
Shipping size(W×D×H)(mm)	790×660×890	1110×940×1075	980×720×1270	
N.W./G.W. (kg)	65/104	169/200	125/165	

Laboratory Glassware Washer

Laboratory Glassware Washer